

What is lymphoma?

This page gives you an overview of how cancer develops and explains what lymphoma is.

On this page

What is cancer?

What is lymphoma?

Lymphoma is the fifth most common type of cancer in the UK. It can occur at any age, even in children. It is nearly always **treatable**; most people live for many years after being diagnosed with lymphoma.

What is cancer?

We all start life as a single cell – the microscopic building block of our bodies. While we're in the womb, this cell divides to form two cells, then four cells, then eight cells, and so on. As they divide, these cells gradually develop into all the different types of cell we're made of, such as blood cells, muscle cells and nerve cells. By the time we're born, our bodies contain about 200 different types of cell – and trillions of cells in total.

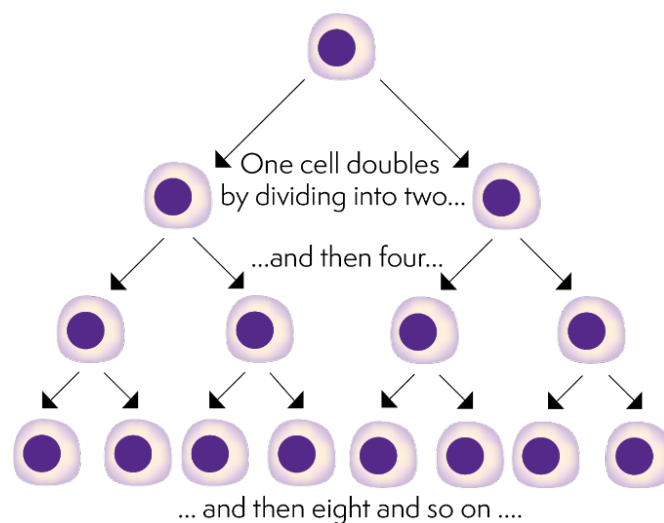


Figure: Cell division

Content supplied by the world's largest charitable funder of cancer research © Cancer Research UK [2002] All rights reserved

After we're born, most of these cells carry on dividing to allow us to grow and develop. Even when we're fully grown, cells continue to divide to replace old cells that die off naturally. In fact, every minute, around 100 million of our cells die and are replaced by new ones.

Cell division and cell death are normal processes. They are controlled by chemical signals. Usually, cell division and cell death are kept carefully in balance so we only make the number of new cells our body needs.

Cancer

Cancer develops when a mistake happens during cell division that changes the DNA inside a cell. This is called a 'mutation'. Mutations can create abnormal cells that stop responding to control signals. These cells might:

- start dividing when they shouldn't
- carry on dividing when they should stop
- stay alive when they should die.

This forms a population of cells that divide faster than they die, leading to an uncontrolled build-up of abnormal cells.

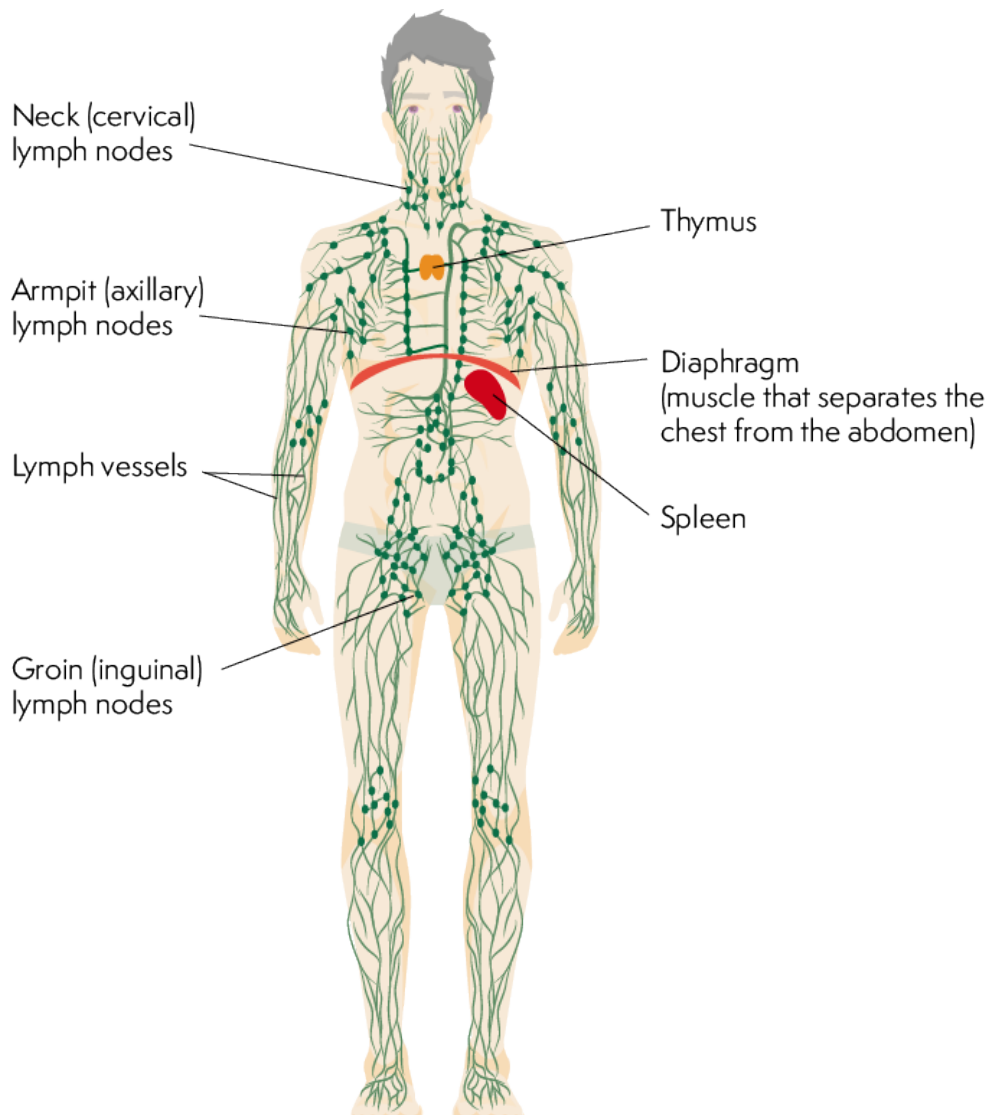
One mutation on its own is not usually enough to cause cancer. For cancer to develop, the abnormal cells need to be able to divide and grow uncontrollably, hide from the body's immune system and get all the nutrients they need to survive. This normally takes a number of different mutations.

Once cancer develops, the abnormal cells might stop your body from making normal, healthy cells. This can prevent organs from working properly. The abnormal cells might spread to other parts of the body and start growing there too. Cancer also uses up the energy and nutrients your body needs.

There are many different types of cancer depending on what type of cell became abnormal. Different types of cancer can have different effects, depending on where the cancer is and how fast it is growing.

What is lymphoma?

Lymphoma is a type of blood cancer that develops when white blood cells called **lymphocytes** grow out of control. Lymphocytes are part of your **immune system**. They travel around your body in your **lymphatic system**, helping you fight infections. Your lymphatic system runs throughout your body, similar to your blood circulatory system, carrying a fluid called **lymph**. The fluid passes through **lymph nodes** (glands), which are spread throughout your body.



**Figure: The lymphatic system
(lymph vessels and lymph nodes are shown in green)**

If you have lymphoma, your lymphocytes divide in an abnormal way or do not die when they should. The abnormal lymphocytes build up, usually in lymph nodes in your armpits, neck or groin. However, they can collect in almost any part of your body.

The **symptoms of lymphoma** depend on where the lymphoma starts, what parts of your body it affects, and what **type of lymphoma** it is. There are over 60 different types, broadly grouped into **Hodgkin lymphomas** and **non-Hodgkin lymphomas**. Non-Hodgkin lymphomas are further grouped depending on whether they are slow-growing (described as 'low-grade') or fast-growing ('high-grade'). Different types of lymphoma behave differently and need different **treatment**.

What is the difference between lymphoma and leukaemia?

Lymphoma and leukaemia are both types of blood cancer (also known as 'haematological' cancers). Although there are similarities between some types of lymphoma and leukaemia, most types develop differently. They also behave differently and are treated differently.

- Lymphoma affects lymphocytes. The abnormal cells develop in the lymph nodes or organs of the **lymphatic system**.
- Leukaemia affects white blood cells, including lymphocytes. The abnormal cells develop in the bone marrow or the bloodstream.

Bloodwise and **Leukaemia Care** have more information about leukaemia.

We have separate information about the topics in **bold font**. Please get in touch if you'd like to request copies or if you would like further information about any aspect of lymphoma. Phone **0808 808 5555** or email **information@lymphoma-action.org.uk**.

References

The full list of references for this page is available on our website. Alternatively, email **publications@lymphoma-action.org.uk** or call 01296 619409 if you would like a copy.

Acknowledgements

- Jane Ogleby, Macmillan Haematology Nurse Specialist, Sandwell and West Birmingham Hospitals NHS Trust.
 - We would like to thank the members of our Reader Panel who gave their time to review this information.
-

Content last reviewed: June 2019
Next planned review: June 2022
LYMweb004Whatislym2019v3



© Lymphoma Action

Tell us what you think and help us to improve our resources for people affected by lymphoma. If you have any feedback, please visit lymphoma-action.org.uk/Feedback or email publications@lymphoma-action.org.uk.

All our information is available without charge. If you have found it useful and would like to make a donation to support our work you can do so on our website lymphoma-action.org.uk/Donate. Our information could not be produced without support from people like you. Thank you.

Disclaimer

We make every effort to make sure that the information we provide is accurate at time of publication, but medical research is constantly changing. Our information is not a substitute for individual medical advice from a trained clinician. If you are concerned about your health, consult your doctor.

Lymphoma Action cannot accept liability for any loss or damage resulting from any inaccuracy in this information or third party information we refer to, including that on third party websites.

Neither the Information Standard scheme operator nor the scheme owner shall have any responsibility whatsoever for costs, losses or direct or indirect damages or costs arising from inaccuracy of information or omissions in the information published on the website on behalf of Lymphoma Action.